

Trident



Trident Series Connector

With a proven history of engineering and manufacturing excellence spanning over 90 years, ITT has delivered a broad range of innovative product solutions that have and continue to enable our customers to meet their most demanding design requirements. ITT's design centers provide time proven high quality products and exceptional service to customers through a global network of field application engineers, sales force and manufacturing facilities.

The Trident series is a versatile range of electrical connectors with fully interchangeable contacts. With a variety of connector options to service the industrial and transportation markets, Trident is available in low-cost rectangular, rack & panel and circular configurations supporting industrial, shielded and harsh environment requirements. The ever expanding product line now offers customers new flame retardant and high voltage options.

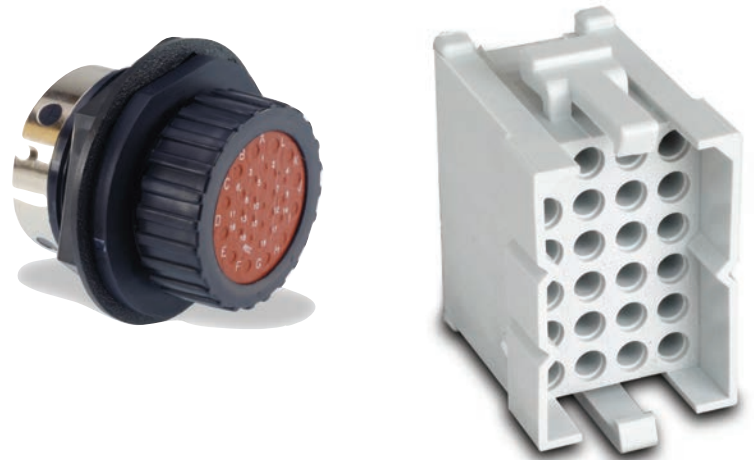
Innovative Interconnect Benefits

- IP 67 environmental resistant
- Interchangeable contacts between all series
- Plastic & metal shells available in sizes 10-24
- Mixed signal and power contact layouts
- Shell to shell polarization
- Low cost of ownership



Product Features

- UL & CSA listed
- Positive bayonet locking
- High voltage connectors are fully VDE certified*
- Standard or reverse plug/receptacles are available
- No insertion tools required and a common extraction tool for all contacts
- Stainless steel three-prong centering clip ensures proper contact alignment



Applications


- Vehicle Cabins
- Offroad & Industrial Vehicles
- Agricultural Machinery
- Lighting
- Construction Vehicles
- Cooling & Heating Systems
- Electric & Hybrid Vehicles
- Robotic Systems



Trident Selection Guide

Max. Voltage	Max. Current	Operating Temp	Durability
500 VAC ¹	10 - 40 Amps ²	-40 to +125 degrees C	500 mating cycles ³

Product Portfolio

Trident Product Line		Number of Contacts	Contacts	Max. Current	Max. Voltage	Durability***	Max. IP Class
Rectangular (SnapLock)	Snap Together - Rectangular	2 - 36	Signal: 0,08 - 2,5 mm ² (AWG 26-14)	16 A	250 V AC	500 Mating Cycles	IP 40
	Snap Together - Slimline	3 - 10	Signal: 0,08 - 2,5 mm ² (AWG 26-14)	10 A	250 V AC	500 Mating Cycles	IP 40
	Flame Retardant	2 - 36	Signal: 0,08 - 2,5 mm ² (AWG 26-14)	16 A	250 V AC	500 Mating Cycles	IP 40
Circular (Bayonet Coupling)	Ringlock	4 - 48	Signal: 0,08 - 2,5 mm ² (AWG 26-14)	16 A	380 V AC**	500 Mating Cycles	IP 65
	Neptune	12 - 48	Signal: 0,08 - 2,5 mm ² (AWG 26-14) Power*: 0,5 - 4,0 mm ² (AWG 20-12)	16 A / 30 A	250 V AC	500 Mating Cycles	IP 67
	Neptune Metal (Shielded)	4 - 19	Signal: 0,08 - 2,5 mm ² (AWG 26-14) Power*: 0,5 - 8,0 mm ² (AWG 20-8)	16 A / 40 A	500 V AC**	200 Mating Cycles	IP 67
	High Voltage (Shielded) 	4	Power: 0,5 - 4,0 mm ² (AWG 20-12)	34 A	500 V DC / AC	200 Mating Cycles	IP 67
* Mixed power and signal layouts available **One layout only. All other layouts: 250 V AC ***Depends on plating and types of contacts used							

¹ Depends on contacts used, layout and degree of debris or liquid. ² Depends on number and type of contacts used. ³ Depends on plating and type of contacts used. * For High Voltage products, incorrect wiring or assembly of connectors or misuse may result in electric shock, burn or local overheating. To avoid damage to any component parts or property, physical damage, or physical injury, connectors must not be disconnected under load.

Visit us online at www.ittcannon.com, or these social media networks



ITT Corporation

Americas:
George Blazas
860.845.8294
george.blazas@itt.com

Europe:
Nadja Klopfer
49.7151.699.106
nadja.klopfer@itt.com

Asia:
Robin He
86.755.27267036
robin.he@itt.com

Japan:
Atsushi Matsuo
81.46.257.2010
atsushi.matsuo@itt.com